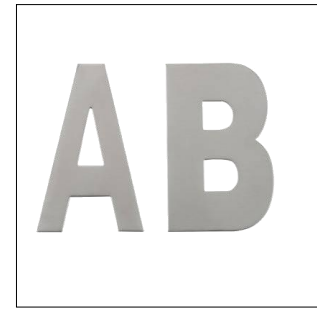


LETTERBOX LETTERS & NUMBERS

LETTERS A TO E – BRUSHED 304 STAINLESS STEEL

Concealed fixings supplied. Size: 100mm

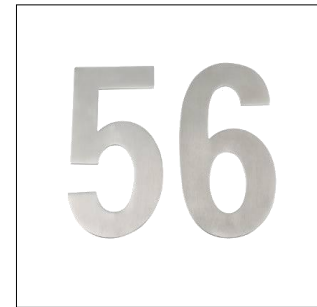
PRODUCT CODE	DESCRIPTION	QTY	PER	PCK
722SS100A	ALPHABET LETTER (A) S/STEEL	1	EA	10
722SS100B	ALPHABET LETTER (B) S/STEEL	1	EA	10
722SS100C	ALPHABET LETTER (C) S/STEEL	1	EA	10
722SS100D	ALPHABET LETTER (D) S/STEEL	1	EA	10
722SS100E	ALPHABET LETTER (E) S/STEEL	1	EA	10



NUMBERS 0 TO 9 - BRUSHED 304 STAINLESS STEEL

Concealed fixings supplied. Size: 100mm

PRODUCT CODE	DESCRIPTION	QTY	PER	PCK
721SS1000	NUMBER PLATE (0) S/STEEL	1	EA	10
721SS1001	NUMBER PLATE (1) S/STEEL	1	EA	10
721SS1002	NUMBER PLATE (2) S/STEEL	1	EA	10
721SS1003	NUMBER PLATE (3) S/STEEL	1	EA	10
721SS1004	NUMBER PLATE (4) S/STEEL	1	EA	10
721SS1005	NUMBER PLATE (5) S/STEEL	1	EA	10
721SS1006	NUMBER PLATE (6) S/STEEL	1	EA	10
721SS1007	NUMBER PLATE (7) S/STEEL	1	EA	10
721SS1008	NUMBER PLATE (8) S/STEEL	1	EA	10
721SS1009	NUMBER PLATE (9) S/STEEL	1	EA	10



NUMBERS 0 TO 9 - BRUSHED 304 STAINLESS STEEL

Concealed fixings supplied. Size: 155mm

PRODUCT CODE	DESCRIPTION	QTY	PER	PCK
721SS1550	NUMBER PLATE (0) S/STEEL	1	EA	10
721SS1551	NUMBER PLATE (1) S/STEEL	1	EA	10
721SS1552	NUMBER PLATE (2) S/STEEL	1	EA	10
721SS1553	NUMBER PLATE (3) S/STEEL	1	EA	10
721SS1554	NUMBER PLATE (4) S/STEEL	1	EA	10
721SS1555	NUMBER PLATE (5) S/STEEL	1	EA	10
721SS1556	NUMBER PLATE (6) S/STEEL	1	EA	10
721SS1557	NUMBER PLATE (7) S/STEEL	1	EA	10
721SS1558	NUMBER PLATE (8) S/STEEL	1	EA	10
721SS1559	NUMBER PLATE (9) S/STEEL	1	EA	10

