

DOOR STOPS

DOOR STOP - WALL MOUNT - ALUMINIUM

2 screw fixings supplied.
Base: 38mm, length: 75mm.

PRODUCT CODE	DESCRIPTION	QTY	PER	PCK
203BR	DOOR STOP ALUM. BRASS FINISH	1	EA	10
203CP	DOOR STOP ALUM. ANODISED	1	EA	10
203FB	DOOR STOP ALUM. BRONZE	1	EA	10
203PW	DOOR STOP ALUM. WHITE	1	EA	10
203SC	DOOR STOP ALUM. S/ANODISED	1	EA	10
203SCB	DOOR STOP BULK S/ANODISED	50	EA	1



DOOR STOP - WALL MOUNT - SOLID BRASS

3 screw fixings supplied.

Base: 45mm, length: 87mm.

PRODUCT CODE	DESCRIPTION	QTY	PER	PCK
204BR	DOOR STOP BRASS	1	EA	10
204SC	DOOR STOP SATIN CHROME	1	EA	10



DOOR STOP - WALL MOUNT - SOLID BRASS

Fixings supplied.
Concealed fixing.
Base: 28mm, length: 77mm

PRODUCT CODE	DESCRIPTION	QTY	PER	PCK
403BR	DOOR STOP BRASS	1	EA	10
403SC	DOOR STOP S/CHROME	1	EA	10
403SCB	DOOR STOP BULK S/CHROME	50	EA	1



DOOR STOP - WITH HOOK - STAINLESS STEEL

Door Stop and hook
Stainless steel
Concealed fixing. Fixings included.
Base: 50mm, length: 95mm

PRODUCT CODE	DESCRIPTION	QTY	PER	PCK
604SS	DOOR STOP WITH HOOK S/STEEL	1	EA	10

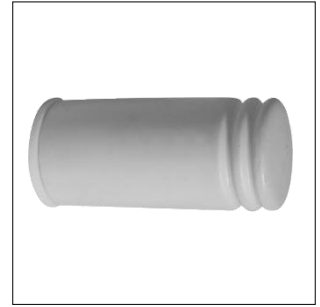


DOOR STOPS

DOOR STOP - WALL MOUNT - PLASTIC

Plastic cushion type door stop.
 Concealed fixing. Fixings included
 Base: 35mm, length: 75mm.

PRODUCT CODE	DESCRIPTION	QTY	PER	PCK
605PW	DOOR STOP PLASTIC	1	EA	20
605PW10	DOOR STOP 10 PACK PLASTIC	10	EA	1
605PWB	DOOR STOP BULK PLASTIC	50	EA	1



DOOR STOP - WALL MOUNT - ZINC DIECAST

Fixings supplied.
 Grey tip.

Base: 37mm, length: 75mm.

PRODUCT CODE	DESCRIPTION	QTY	PER	PCK
701BR	DOOR STOP BRASS	1	EA	10
701SC	DOOR STOP S/CHROME	1	EA	10



DOOR STOP & HOOK - WALL MOUNT - ZINC DIECAST

Fixings supplied.
 Black tip.

Base: 39mm, length: 90mm.

PRODUCT CODE	DESCRIPTION	QTY	PER	PCK
702SC	DOOR STOP W/HOOK S/CHROME	1	EA	6



DOOR STOP - WALL MOUNT - STAINLESS STEEL

Fixings supplied.
 Concealed fixing.
 Made from solid Stainless Steel 304.

Base: 32mm, length: 83mm.

PRODUCT CODE	DESCRIPTION	QTY	PER	PCK
400SS	DOOR STOP STAINLESS STEEL	1	EA	20



DOOR STOP - WALL MOUNT - ZINC DIECAST

Fixings supplied.
 Concealed fixing.

Base: 32mm, length: 83mm.

PRODUCT CODE	DESCRIPTION	QTY	PER	PCK
404SN	DOOR STOP SATIN NICKEL FINISH	1	EA	10



DOOR STOPS

DOOR STOP - WALL MOUNT - ZINC DIECAST

Fixings supplied.
Concealed fixing.

Base: 32mm length: 80mm

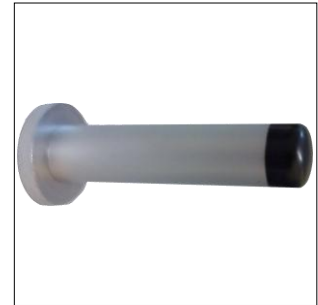
PRODUCT CODE	DESCRIPTION	QTY	PER	PCK
400SC	DOOR STOP SATIN CHROME	1	EA	10



DOOR STOP - WALL MOUNT - ZINC DIECAST

Fixings supplied.
Concealed fixing.
Two sizes available.
Base: 32mm, lengths: 85mm & 105mm

PRODUCT CODE	DESCRIPTION	QTY	PER	PCK
202DS85A	DOOR STOP (85MM) S/CHROME	1	EA	10
202DS105A	DOOR STOP (105MM) S/CHROME	1	EA	10



SQUARE DOOR STOP - WALL MOUNT - ZINC DIECAST

Fixings supplied.
Zinc diecast.
Base: 40mm, lengths: 80mm & 100mm

PRODUCT CODE	DESCRIPTION	QTY	PER	PCK
231SC	DOOR STOP (80MM) S/CHROME	1	EA	10
231SC100	DOOR STOP (100MM) S/CHROME	1	EA	10



SQUARE DOOR STOP - WALL MOUNT - ZINC DIECAST

Fixings supplied.
Concealed fixing.
Base: 25mm, lengths: 80mm & 100mm

PRODUCT CODE	DESCRIPTION	QTY	PER	PCK
232SC	DOOR STOP (80MM) S/CHROME	1	EA	10
232SC100	DOOR STOP (100MM) S/CHROME	1	EA	10



DOOR STOP - WALL MOUNT - STAINLESS STEEL

Fixings supplied.
Concealed fixing.
Made from Stainless Steel 304.

Base: 25mm, length: 70mm

PRODUCT CODE	DESCRIPTION	QTY	PER	PCK
601SS	DOOR STOP STAINLESS STEEL	1	EA	10



DOOR STOPS

DOOR STOP - FLOOR MOUNT - ALUMINIUM

Supplied with M8 hanger bolt fixing & 8mm dynabolt.
 Suitable for concrete & timber floors.
 Two sizes: Base: 37mm, 52mm diameter, length 38mm & 60mm.
 Height 60mm available in Satin finish only.

PRODUCT CODE	DESCRIPTION	QTY	PER	PCK
207BR	DOOR STOP BRASS FINISH	1	EA	10
207FB	DOOR STOP BRONZE	1	EA	10
207SC	DOOR STOP S/ANODISED	1	EA	10
207BS60	DOOR STOP (60MM) S/ANODISED	1	EA	10
207SCB	DOOR STOP BULK S/ANODISED	50	EA	1



DOOR STOP - TWO PIECE FLOOR MOUNT - ALUMINIUM

Supplied with M8 hanger bolt fixing & 8mm dynabolt.
 Suitable for concrete & timber floors.

Base 37mm, 52mm diameter, length 38mm

PRODUCT CODE	DESCRIPTION	QTY	PER	PCK
207SC2	2 PIECE DOOR STOP S/CHROME	1	EA	10
207SC2B	2 PIECE DOOR STOP BULK S/CHR.	50	EA	1



DOOR STOP - FLOOR MOUNT - ZINC DIECAST

Fixings supplied.
 Concealed fixing.

Base: 40mm, length: 32mm

PRODUCT CODE	DESCRIPTION	QTY	PER	PCK
723BR	DOOR STOP BRASS FINISH	1	EA	10
723SC	DOOR STOP BRUSHED S/CHROME	1	EA	10



SQUARE DOOR STOP - FLOOR MOUNT - STAINLESS STEEL

Fixings supplied.
 Concealed fixing.
 Made from Stainless Steel 304.
 Base: 46mm, length: 27mm

PRODUCT CODE	DESCRIPTION	QTY	PER	PCK
724SS	DOOR STOP STAINLESS STEEL	1	EA	10



DOOR STOPS

DOOR STOP - FLOOR MOUNT - STAINLESS STEEL

Fixings supplied.
Concealed fixing.
Made from Stainless Steel 304.

Base: 42mm, length: 40mm

PRODUCT CODE	DESCRIPTION	QTY	PER	PCK
726SS	DOOR STOP STAINLESS STEEL	1	EA	10



DOOR STOP - FLOOR MOUNT - STAINLESS STEEL

Supplied with M8 hanger bolt fixing.
Suitable for concrete & timber floors.
Supplied with a dynabolt 8mm thread.
Base: 28mm, length: 40mm
Base: 28mm, length: 65mm

PRODUCT CODE	DESCRIPTION	QTY	PER	PCK
201FS40SS	DOOR STOP 40MM STAINLESS	1	EA	10
201FS65SS	DOOR STOP 65 MM STAINLESS	1	EA	10



DOOR STOP - FLOOR MOUNT - ZINC DIECAST

Fixings supplied.
Concealed fixing.

Base: 46mm, height: 27mm

PRODUCT CODE	DESCRIPTION	QTY	PER	PCK
98725SC	DOOR STOP S/CHROME	1	EA	10

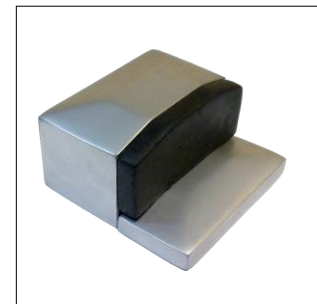


DOOR STOP - FLOOR MOUNT - ZINC DIECAST

Fixings supplied.
Concealed fixing.

Base width: 46mm, height: 27mm

PRODUCT CODE	DESCRIPTION	QTY	PER	PCK
206SC	DOOR STOP SATIN CHROME	1	EA	10



FLOOR MOUNT DOOR STOP & HOLDER - ZINC DIECAST

Fixings supplied.

Size: Height 45mm. Base 44mm x 28mm.
Holder 44mm x 28mm.

PRODUCT CODE	DESCRIPTION	QTY	PER	PCK
212SCF	DOOR STOP & HOLDER S/CHROME	1	EA	10



DOOR STOPS

SQUARE DOOR STOP WITH BASE - FLOOR MOUNT

Fixings supplied.
Aluminium door stop with a Zinc base.

Base: 40mm, length 44mm.

PRODUCT CODE	DESCRIPTION	QTY	PER	PCK
220SC	DOOR STOP W/BASE S/CHROME	1	EA	10



DOOR STOP - FLOOR MOUNT - ALUMINIUM

Fixings supplied.
Concealed fixing.

Base: 25mm, length 40mm.

PRODUCT CODE	DESCRIPTION	QTY	PER	PCK
221SC	DOOR STOP S/ANODISED	1	EA	10



DOOR STOP - LATCHING WALL MOUNT - ZINC DIECAST

Powder coat finishes available, suitable for exterior use.
Satin Black and MN White in stock. Base: 45mm, length: 80mm
Other Colours available on request. Minimum order required

PRODUCT CODE	DESCRIPTION	QTY	PER	PCK
600SC	LATCH. DOOR STOP P/COAT SATIN	1	EA	10
600PB	LATCH. DOOR STOP P/COAT BLACK	1	EA	10
600PW	LATCH. DOOR STOP P/COAT WHITE	1	EA	10
600RM	LATCH. DOOR STOP RAW FINISH	1	EA	10



DOOR STOP – SELF LATCHING WALL MOUNT - ZINC DIECAST

Designed by Miles Nelson.
Powder coat zinc alloy.
Suitable for interior and exterior use. Fits both a left and right sided door.
Foot operated release. Fixings supplied.
Base: 50mm, length: 80mm

PRODUCT CODE	DESCRIPTION	QTY	PER	PCK
700SC	LATCHING DOOR STOP SATIN	1	EA	4



FLOOR MOUNT DOOR STOP & HOLDER - ZINC DIECAST

3 screw fixing on base and holder.
Screw fixings supplied.

Base: 40mm, length: 75mm
Holder 44mm x 28mm.

PRODUCT CODE	DESCRIPTION	QTY	PER	PCK
703BR	STOP & HOLDER BRASS FINISH	1	EA	8
703SC	DOOR STOP & HOLDER S/CHROME	1	EA	8



DOOR STOPS

DOOR STOP - LATCHING WALL MOUNT - ZINC DIECAST

Square base with 4 screw fixings.
Swivelling latch.

PRODUCT CODE	DESCRIPTION	QTY	PER	PCK
218SC	L/BACK DOOR STOP S/CHROME	1	EA	10
218SN	L/BACK DOOR STOP S/NICKEL	1	EA	10



HEAVY DUTY LATCH BACK DOOR STOP - FORGED BRASS

Stainless Steel screw fixings supplied.
Suitable for exterior use

Size: Upstand: 45mm x 68mm base, 105mm engaged height.
Eyelet: 39mm wide, 62mm long.

PRODUCT CODE	DESCRIPTION	QTY	PER	PCK
608SC	HD DOOR STOP S/CHROME	1	EA	10

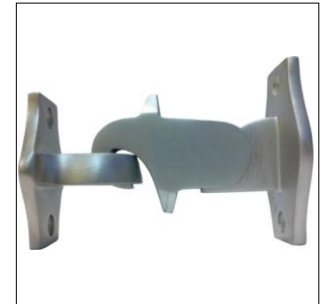


LATCH BACK - WALL MOUNT - SOLID BRASS

Fixings supplied.
Suitable for exterior use

Size: Base 61 x 38mm. Hook 60mm.
Engaged length: 105mm overall.

PRODUCT CODE	DESCRIPTION	QTY	PER	PCK
277SC	LATCH BACK D/STOP S/CHROME	1	EA	5



MAGNETIC WALL/FLOOR MOUNT DOOR STOP - ZINC

Magnetic door stop
Concealed fixing. Fixings included & dynabolt for concrete fixing.
Base: 45mm, Length: 80mm

PRODUCT CODE	DESCRIPTION	QTY	PER	PCK
603SC	MAGNETIC DOOR STOP S/CHROME	1	EA	10



MAGNETIC HOLDER – FLOOR MOUNT - ZINC

Fixings supplied.
Cushion sprung magnet.

Width: 45mm, Height: 39mm

PRODUCT CODE	DESCRIPTION	QTY	PER	PCK
704BR	MAG. DOOR HOLDER BRASS	1	EA	10
704SC	MAG. DOOR HOLDER S/CHROME	1	EA	10



DOOR STOPS

MAGNETIC HOLDER – FLOOR /WALL MOUNT - SOLID BRASS

Fixings supplied.
Spring cushioned catch.

Base: 50mm, Length: 75mm Holder: 31mm diameter.

PRODUCT CODE	DESCRIPTION	QTY	PER	PCK
705BR	MAG. DOOR HOLDER BRASS	1	EA	6
705SC	MAG. DOOR HOLDER S/CHROME	1	EA	6



MAG. DOOR STOP - FLOOR/WALL MOUNT - ZINC DIECAST

Fixings supplied.
Concealed fixing.
Spring cushioned magnetic catch.

Base: 40mm length: 78mm.

PRODUCT CODE	DESCRIPTION	QTY	PER	PCK
714SN	MAGNETIC DOOR STOP S/NICKEL	1	EA	10



WALL MOUNT – SPRING STEEL

Fixings supplied.
Concealed fixing.
White rubber tip.

Base: 25mm length: 80mm.

PRODUCT CODE	DESCRIPTION	QTY	PER	PCK
606CP	SPRING DOOR STOP CHROME	1	EA	20



SQUARE DOOR STOP WALL MOUNT – STAINLESS STEEL

Screw fixing built in to base.
Black rubber tip.
Brushed stainless steel.

Shaft width 16mm, Length: 80mm

PRODUCT CODE	DESCRIPTION	QTY	PER	PCK
402SS	DOOR STOP STAINLESS STEEL	1	EA	10

