

# DOOR FITTINGS

## FLUSH NECKED BOLT –SOLID BRASS

Fixings supplied, one piece extrusion, suitable for bifold, sliding & hinged doors.  
100mm throw size: 20mm, 150mm throw size: 25mm.  
8mm neck offset: 6mm, 10mm neck offset: 11mm

PRODUCT CODE	DESCRIPTION	QTY	PER	PCK
216BR08100	FLUSH BOLT (100MM) BRASS	1	EA	10
216BR10150	FLUSH BOLT (150MM) BRASS	1	EA	10
216SC08100	FLUSH BOLT (100MM) S/CHROME	1	EA	10
216SC10150	FLUSH BOLT (150MM) S/CHROME	1	EA	10



## FLUSH SLIDE BOLT –SOLID BRASS

Fixings supplied, one piece extrusion, suitable for bifold, sliding & hinged doors.  
100mm throw size: 38mm, 150mm throw size: 30mm.

PRODUCT CODE	DESCRIPTION	QTY	PER	PCK
215BR08100	SLIDE BOLT (100MM) BRASS	1	EA	10
215BR10150	SLIDE BOLT (150MM) BRASS	1	EA	10
215SC08100	SLIDE BOLT (100MM) S/CHROME	1	EA	10
215SC10150	SLIDE BOLT (150MM) S/CHROME	1	EA	10



## FLUSH BOLT – FORGED SOLID BRASS

Fixings supplied.  
Available in brushed Satin Chrome & Brass finishes.  
Size: 150mm x 19mm, 18mm throw, 18.5mm depth.

PRODUCT CODE	DESCRIPTION	QTY	PER	PCK
711BR	FLUSH BOLT (150MM) BRASS	1	EA	10
711SC	FLUSH BOLT (150MM) S/CHROME	1	EA	10



## FLUSH BOLT – FORGED SOLID BRASS

Fixings supplied, heavy duty.  
Available in brushed Satin Chrome & Satin Nickel finishes.  
Size: 150mm x 19mm, 18mm throw, 18.5mm depth.

PRODUCT CODE	DESCRIPTION	QTY	PER	PCK
305SC150	FLUSH BOLT (150MM) S/CHROME	1	EA	10
305SN150	FLUSH BOLT (150MM) S/NICKEL	1	EA	10



# DOOR FITTINGS

## DUST SOCKET - SOLID BRASS

Length 40mm, diameter 19mm.  
 Fits 12mm diameter bolts.  
 Suits 711, 215, 216 & 305 series of flush bolts.

PRODUCT CODE	DESCRIPTION	QTY	PER	PCK
706SC	DUST SOCKET SATIN CHROME	1	EA	10



## DUST SOCKET – SOLID BRASS

Overall length 47mm, flange diameter 43mm, socket diameter 21mm.  
 Suits 711, 215, 216 & 305 series of flush bolts.  
 214SC/SN has exposed fixings for going into timber.  
 314SC has no fixing holes for going into concrete (as pictured).

PRODUCT CODE	DESCRIPTION	QTY	PER	PCK
214SC	DUST SOCKET SATIN CHROME	1	EA	10
215SN	DUST SOCKET SATIN NICKEL	1	EA	10
314SC	DUST SOCKET SATIN CHROME	1	EA	10



## INDICATOR BOLTS

Fixings supplied.  
 Suits door thickness 28mm-45mm  
 Stainless Steel & Zinc Diecast options.

PRODUCT CODE	DESCRIPTION	QTY	PER	PCK
3065SC	INDICATOR BOLT SATIN CHROME	1	EA	10
710SS	INDICATOR BOLT S/STEEL	1	EA	10



## DOOR GUARD

Fixings supplied.  
 Available in Brass & Satin Chrome finishes.

PRODUCT CODE	DESCRIPTION	QTY	PER	PCK
707BR	DOOR GUARD BRASS PLATED	1	EA	10
707SC	DOOR GUARD SATIN CHROME	1	EA	10



## DOOR VIEWER SOLID BRASS

200 degree viewing angle.  
 Suits doors 36mm to 60mm.

PRODUCT CODE	DESCRIPTION	QTY	PER	PCK
709BR	DOOR VIEWER BRASS	1	EA	10
709SC	DOOR VIEWER S/CHROME	1	EA	10



# DOOR FITTINGS

## ROLLER CATCH

Fixings supplied.  
Adjustable brass roller.  
Finish indicates striker plate colour.

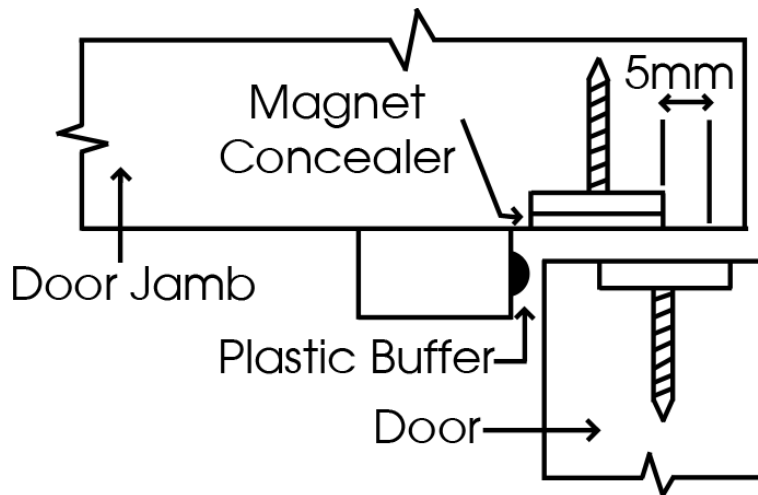
PRODUCT CODE	DESCRIPTION	QTY	PER	PCK
333BR	ROLLER CATCH BRASS	1	EA	10
333SC	ROLLER CATCH SATIN CHROME	1	EA	10
333SCB	ROLLER CATCH BULK S/CHROME	50	EA	1



## DOOR MAGNETS

Countersunk fixings supplied. (See fitting instructions below)  
Size: 22mm x 8mm.  
Magnet concealers supplied with 4 packs.

PRODUCT CODE	DESCRIPTION	QTY	PER	PCK
332CP	DOOR MAGNETS (PAIR)	1	EA	20
332CPB	DOOR MAGNETS (BULK)	50	EA	1
332CP4	DOOR MAGNET 4 PACK	4	EA	1



## MORTICE REBATE KIT SATIN NICKEL

For wooden doors.  
Fits both right and left handed doors with a 12.5mm rebate.  
Quality construction. Easy to install.  
Fixings supplied.  
Suitable for use with 5 lever mortice locks and Euro and Fortress mortice locks only.

PRODUCT CODE	DESCRIPTION	QTY	PER	PCK
716SN12	MORTICE REBATE KIT S/NICKEL	1	EA	5

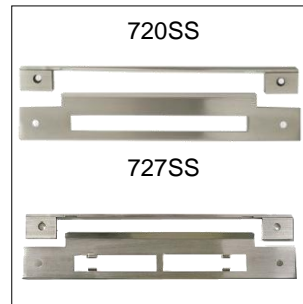


# DOOR FITTINGS

## REBATE KIT

Suit 715, 716, 728 & 729 mortice locks.  
 Fixings supplied. Reversible  
 Satin Nickel bracket, Stainless Steel striker.

PRODUCT CODE	DESCRIPTION	QTY	PER	PCK
720SS (SUITS 715,716)	REBATE KIT STAINLESS STEEL	1	EA	10
720BR (SUITS 715,716)	REBATE KIT BRASS	1	EA	10
727SS (SUITS 728,729)	REBATE KIT STAINLESS STEEL	1	EA	10



## REBATE KIT

Installation of latch for rebated doors (single or pairs).  
 Note that the rebated section of the doors must be exactly 12.5mm deep.  
 Fixings supplied

PRODUCT CODE	DESCRIPTION	QTY	PER	PCK
291BR	REBATE KIT BRASS	1	EA	10
291CP	REBATE KIT CHROME	1	EA	10
291SC	REBATE KIT SATIN CHROME	1	EA	10
291FB	REBATE KIT BRONZE	1	EA	10



## TUBULAR LATCH - STAINLESS STEEL

Stainless Steel face plate and strike.  
 Size: 60mm backset only, 7.5mm spindle hole.

PRODUCT CODE	DESCRIPTION	QTY	PER	PCK
9860SS	TUBULAR LATCH 60MM S/STEEL	1	EA	10



## TUBULAR LATCH

**Designed by Miles Nelson**  
 Suitable for through door fixing handles with 38mm - 41mm centres  
 Fixings supplied, tested to 200,000 cycles.  
 Size: 60mm backset, 8mm spindle hole.  
 Reduced lever movement to open.

PRODUCT CODE	DESCRIPTION	QTY	PER	PCK
415SN60	TUBULAR LATCH NICKEL PLATED	1	EA	20
415SS60	TUBULAR LATCH S/STEEL	1	EA	20

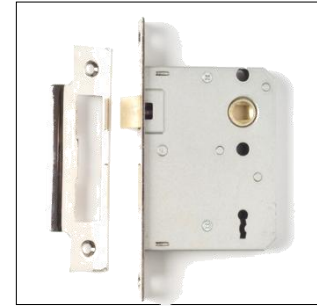


# DOOR FITTINGS

## MORTICE LOCK 3 LEVER

Slimline design. One turn of the key dead locks the door. Closed case.  
 Used in conjunction with a door handle, the lock has a sprung latch which catches as the door closes, as well as the dead bolt lock.  
 Fixings supplied. Through door centres, 38mm.  
 Size: 45mm backset or 58mm backset lock. 8mm spindle.

PRODUCT CODE	DESCRIPTION	QTY	PER	PCK
716SSN663	3 LEVER MORTICE LOCK (45MM)	1	EA	5
716SSN763	3 LEVER MORTICE LOCK (58MM)	1	EA	5



## MORTICE LOCK 5 LEVER

Slimline design with anti saw rollers. Closed case.  
 One turn of the key dead locks the door. Through door centres, 38mm.  
 Used in conjunction with a door handle, the lock has a sprung latch which catches as the door closes, as well as the dead bolt lock.  
 Made to British standards BS5872. Fixings supplied.  
 Size: 45mm backset or 58mm backset lock. 8mm spindle.

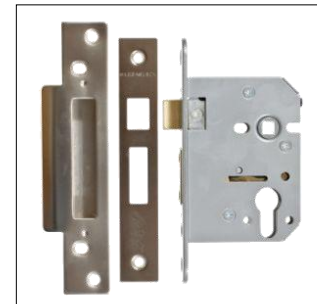
PRODUCT CODE	DESCRIPTION	QTY	PER	PCK
716SN665	5 LEVER MORTICE LOCK (45MM)	1	EA	5
716SN765	5 LEVER MORTICE LOCK (58MM)	1	EA	5



## EURO MORTICE LOCK

Slimline design. Anti saw rollers  
 Reversible sash bolt. Through door centres, 38mm.  
 Certified to British standards  
 D.I.Y. friendly installation  
 Available in 45mm and 58mm backset options. 8mm spindle.

PRODUCT CODE	DESCRIPTION	QTY	PER	PCK
716SN45	EURO MORTICE LOCK (45MM)	1	EA	5
716SN58	EURO MORTICE LOCK (58MM)	1	EA	5



# DOOR FITTINGS

## EURO MORTICE LOCK

Reversible latch, key operated latch. Double action dead bolt, closed case.  
Suits 38mm - 42mm through door furniture, fixings supplied.  
Backset 45mm and 60mm. C/C 85mm. 8mm spindle hole.

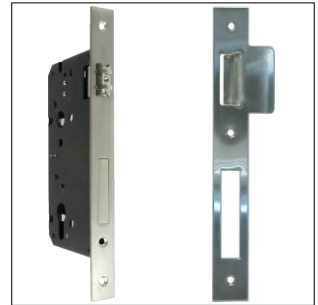
PRODUCT CODE	DESCRIPTION	QTY	PER	PCK
716BR45	MORTICE LOCK (45MM) BRASS	1	EA	10
716BR60	MORTICE LOCK (60MM) BRASS	1	EA	10
716SS45	MORTICE LOCK (45MM) S/STEEL	1	EA	10
716SS60	MORTICE LOCK (60MM) S/STEEL	1	EA	10



## EURO ROLLER LOCK

Double action dead bolt. Closed case & Adjustable roller.  
Supplied with left and right hand strikers - **Designed by Miles Nelson.**  
Suits 38 – 42mm through door furniture.  
Fixings supplied. **Stainless Steel** face and strike plates.  
60mm backset.

PRODUCT CODE	DESCRIPTION	QTY	PER	PCK
728SS60	ROLLER LOCK (60MM)	1	EA	1



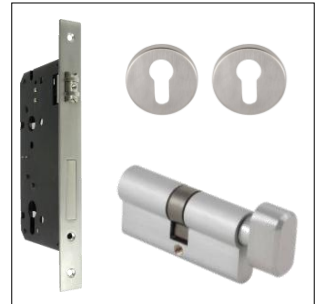
## ROLLER LOCK KIT

Kit includes:

- 728SS60 Euro Roller Lock.
- 717SC65KD Euro Cylinder & Turn.
- 636SSBP Euro Escutcheon.

Keyed different. Supplied with three keys. Fixings supplied.  
60mm backset.

PRODUCT CODE	DESCRIPTION	QTY	PER	PCK
729SS	LOCK KIT (60MM) S/STEEL	1	EA	1



## MORTICE LOCK KIT

Kit includes;

- 716 Euro Mortice Lock.
- 717SC65KD Euro Cylinder & Turn.
- 636SSBP Euro Escutcheon.

Keyed different. Supplied with three keys. Fixings supplied. 60mm backset.

PRODUCT CODE	DESCRIPTION	QTY	PER	PCK
715SN	LOCK KIT (60MM) S/STEEL	1	EA	1



## PULL HANDLE LOCK KITS

Provides a secure latch with turns both sides for doors with pull.

Suits areas where roller latch is not strong enough to hold doors. Kits Include:

- 716SS60 Mortise lock ( de-sprung ) 60mm b/s
- 716SSS ( Square ) **OR** 716SSR ( Round ) finger turns
- 716SSSES ( Square ) **OR** 716SSSER ( Round ) escutcheons

Square or round kits, cylinder options sold separately, see following 2 pages.

PRODUCT CODE	DESCRIPTION	QTY	PER	PCK
716SSSLK60	SQUARE PULL HANDLE LOCK KIT	1	EA	1
716SSRLK60	ROUND PULL HANDLE LOCK KIT	1	EA	1



# DOOR FITTINGS

## MORTICE LOCK ACRYLIC PACKER

To suit 716 series mortice locks  
Used when fitting to aluminium

PRODUCT CODE	DESCRIPTION	QTY	PER	PCK
716-728S8	ACRYLIC SPACER 8MM	1	EA	10
716-728S10	ACRYLIC SPACER 10MM	1	EA	10



## SQUARE ESCUTCHEON - STAINLESS STEEL 304 (PAIR)

Secured onto cylinder with grub screw.

Size: 50mm x 50mm

PRODUCT CODE	DESCRIPTION	QTY	PER	PCK
780SSBP	ESCUTCHEON (50MM) S/STEEL	1	EA	10



## EURO ESCUTCHEON - STAINLESS STEEL 304 (PAIR)

Screw fixings concealed by cover over plate.

Size: 52mm diameter

PRODUCT CODE	DESCRIPTION	QTY	PER	PCK
636SSBP	ESCUTCHEON (52MM) S/STEEL	1	EA	10



## EURO ESCUTCHEON - ZINC

Screw fixings concealed by cover plate.

Oval and Euro profile. Screw on cover plates.

Size: 52mm.

Satin Nickel finish.

PRODUCT CODE	DESCRIPTION	QTY	PER	PCK
987008SN	ESCUTCHEON (OVAL) S/NICKEL	1	EA	10
987010SN	ESCUTCHEON (EURO) S/NICKEL	1	EA	10



## EURO CYLINDER & TURN - SOLID BRASS

C4 keyway. **Keyed alike.**

Supplied with 3 keys.

5 pin, 65mm long cylinder.

PRODUCT CODE	DESCRIPTION	QTY	PER	PCK
717BR65KA10	CYLINDER AND TURN BRASS	1	EA	20
717SC65KA10	CYLINDER AND TURN S/CHROME	1	EA	20
717SN65KA10	CYLINDER AND TURN S/NICKEL	1	EA	20





# DOOR FITTINGS

## EURO CYLINDER & TURN - SOLID BRASS

C4 keyway. **Keyed different.**  
 Supplied with 3 keys.  
 5 pin, 65mm long cylinder.

PRODUCT CODE	DESCRIPTION	QTY	PER	PCK
717BR65KD	CYLINDER AND TURN BRASS	1	EA	20
717SC65KD	CYLINDER AND TURN S/CHROME	1	EA	20



## EURO DOUBLE CYLINDER

C4 keyway. **Keyed alike.**  
 Supplied with 3 keys.  
 5 pin, 65mm long cylinder.

PRODUCT CODE	DESCRIPTION	QTY	PER	PCK
718SC65KA10	DOUBLE CYLINDER S/CHROME	1	EA	20
718SN65KA10	DOUBLE CYLINDER S/NICKEL	1	EA	20



## EURO DOUBLE CYLINDER

C4 keyway. **Keyed different.**  
 Supplied with 3 keys.  
 5 pin, 65mm long cylinder.

PRODUCT CODE	DESCRIPTION	QTY	PER	PCK
718SC65KD	DOUBLE CYLINDER S/CHROME	1	EA	20
718SN65KD	DOUBLE CYLINDER S/NICKEL	1	EA	20



## PRIVACY TURN AND BOLT - BRUSHED STAINLESS STEEL

Supplied with a 60mm privacy bolt. Fixings supplied.  
 Round profile.  
 Size: 52mm rose

PRODUCT CODE	DESCRIPTION	QTY	PER	PCK
635SSBP	PRIVACY TURN & BOLT S/STEEL	1	EA	10



## PRIVACY TURN AND BOLT - BRUSHED STAINLESS STEEL

Supplied with a 60mm privacy bolt. Fixings supplied.  
 Square profile.  
 Size: 52mm diameter rose.

PRODUCT CODE	DESCRIPTION	QTY	PER	PCK
698SS	PRIVACY TURN & BOLT S/STEEL	1	EA	10





# DOOR FITTINGS

## PRIVACY HARDWARE

Fixings supplied.  
Size: 52mm Rose.

PRODUCT CODE	DESCRIPTION	QTY	PER	PCK
987009SN	EMERGENCY RELEASE S/NICKEL	1	EA	10
987007SN	PRIVACY TURN S/NICKEL	1	EA	10
9801SS	PRIVACY BOLT STAINLESS STEEL	1	EA	10
9802SS	COMPLETE PRIVACY KIT	1	EA	1



## FLUSH PULL - ZINC

Fixings supplied.  
Size: 34mm x 100mm.

PRODUCT CODE	DESCRIPTION	QTY	PER	PCK
106FB100	FLUSH PULL (100MM) BRONZE	1	EA	10
106CP100	FLUSH PULL (100MM) CHROME	1	EA	10
106SC100	FLUSH PULL (100MM) S/CHROME	1	EA	10
106GD100	FLUSH PULL (100MM) GOLD	1	EA	10
106PW100	FLUSH PULL (100MM) WHITE	1	EA	10



## FLUSH PULL - ZINC

Fixings supplied.  
Size: 34mm x 140mm.

PRODUCT CODE	DESCRIPTION	QTY	PER	PCK
106FB140	FLUSH PULL (140MM) BRONZE	1	EA	10
106CP140	FLUSH PULL (140MM) CHROME	1	EA	10
106SC140	FLUSH PULL (140MM) S/CHROME	1	EA	10
106GD140	FLUSH PULL (140MM) GOLD	1	EA	10



## FLUSH CAVITY PULLS

Fixings supplied.  
Suits door thickness 32mm-36mm.  
Passage and privacy options.

PRODUCT CODE	DESCRIPTION	QTY	PER	PCK
746SC	PRIVACY CAVITY PULL S/CHROME	1	EA	10
747SC	PASSAGE CAVITY PULL S/CHROME	1	EA	10



# DOOR FITTINGS

## ROUND FLUSH PULL - BRUSHED STAINLESS STEEL 304

To be glued into same size diameter hole.  
 Size: 30, 40 and 50mm flange (outside diameter).  
 Cut out size: 30mm = 26mm, 40mm = 35mm, 50mm = 40mm

PRODUCT CODE	DESCRIPTION	QTY	PER	PCK
744SC30	FLUSH PULL (30MM) S/CHROME	1	EA	20
744SC40	FLUSH PULL (40MM) S/CHROME	1	EA	20
744SC50	FLUSH PULL (50MM) S/CHROME	1	EA	20



## FLUSH PULL OVAL - BRUSHED STAINLESS STEEL 304

Fixings supplied.  
 Size: 120mm x 40mm.  
 Face fixed or concealed fixing options.

PRODUCT CODE	DESCRIPTION	QTY	PER	PCK
712SS	FACE FIX FLUSH PULL S/STEEL	1	EA	10
732SS	CONC. FIX FLUSH PULL S/STEEL	1	EA	10



## FLUSH PULL SQUARE - BRUSHED STAINLESS STEEL 304

Fixings supplied.  
 Size: 34mm x 140mm.  
 Face fixed or concealed fixing options.

PRODUCT CODE	DESCRIPTION	QTY	PER	PCK
713SS	FACE FIX FLUSH PULL S/STEEL	1	EA	10
733SS	CONC. FIX FLUSH PULL S/STEEL	1	EA	10



## FINGER PULLS - BRUSHED STAINLESS STEEL 304

For cavity door edges and cupboard doors.  
 To be glued into same size diameter hole.  
 Size: 26mm diameter cut out.

PRODUCT CODE	DESCRIPTION	QTY	PER	PCK
748SS26	SQUARE FINGER PULL (26MM)	1	EA	10
749SS26	ROUND FINGER PULL (26MM)	1	EA	10



## ROUND FINGER PULL - BRUSHED STAINLESS STEEL 304

To be glued into same size diameter hole.  
 Size: 90mm flange (outside diameter).  
 Cut out size: 70mm

PRODUCT CODE	DESCRIPTION	QTY	PER	PCK
745SS90	ROUND FLUSH PULL S/STEEL	1	EA	10

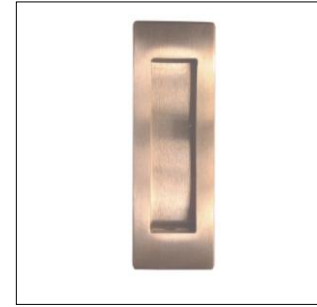


# DOOR FITTINGS

## RECTANGLE FLUSH PULL - BRUSHED STAINLESS STEEL 304

Concealed fixings.  
Supplied with screws.  
Size: 120mm x 40mm, 15mm depth.

PRODUCT CODE	DESCRIPTION	QTY	PER	PCK
981120SS	RECTANGLE FLUSH PULL S/STEEL	1	EA	1



## RECTANGLE FLUSH PULL - BRUSHED STAINLESS STEEL 304

Concealed fixings.  
Supplied with screws.  
Size: 240mm x 40mm, 15mm depth.

PRODUCT CODE	DESCRIPTION	QTY	PER	PCK
9811240SS	RECTANGLE FLUSH PULL S/STEEL	1	EA	10

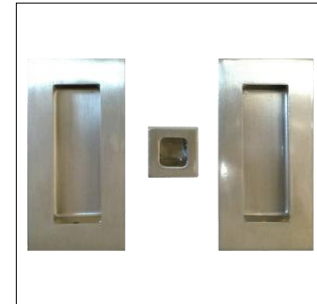


## SQUARE FLUSH PULL KIT - STAINLESS STEEL 304

Fixings supplied.  
Complete cavity slider handle solution.  
Concealed fixings.

Size: Door Pull 120mm x 42mm, 15mm depth.  
Finger Pull 30mm, 25mm depth.

PRODUCT CODE	DESCRIPTION	QTY	PER	PCK
222SS	FLUSH PULL KIT S/STEEL	1	EA	5



## ROUND FLUSH PULL KIT - STAINLESS STEEL 304

Fixings supplied.  
Complete cavity slider handle solution.  
Concealed fixings.

Size: Door Pull 120mm x 42mm, 15mm depth.  
Finger Pull 30mm, 25mm depth.

PRODUCT CODE	DESCRIPTION	QTY	PER	PCK
224SS	ROUND FLUSH PULL KIT S/STEEL	1	EA	10



## SQUARE LOCKING FLUSH PULL KIT - SATIN NICKEL

Fixings supplied.  
Complete privacy sliding door solution.  
Through door fixing.  
Size: Door Pull 150mm x 45mm  
Finger Pull 26mm x 26mm

PRODUCT CODE	DESCRIPTION	QTY	PER	PCK
227SN	FLUSH PULL KIT SATIN NICKEL	1	EA	10



# DOOR FITTINGS

## ROUND LOCKING FLUSH PULL KIT - STAINLESS STEEL 304

Fixings supplied.  
Complete privacy sliding door solution.  
Through door fixing.  
Size: Door Pull 125mm x 45mm  
Finger Pull 30mm  
Note: turn knob protrudes 5mm for recessing doors use **227SN**



PRODUCT CODE	DESCRIPTION	QTY	PER	PCK
228SS	FLUSH PULL KIT S/STEEL	1	EA	5

## DEADBOLTS - BRUSHED STAINLESS STEEL 304

Suitable for light commercial applications.  
Suits door thickness 42-51mm.  
Interchangeable core.  
6 pin euro keyway. Master keyable.



PRODUCT CODE	DESCRIPTION	QTY	PER	PCK
983615SS	DEADBOLT KEY & TURN S/S	1	EA	1
983620SS	DEADBOLT KEY & KEY S/S	1	EA	1

## FRENCH DOOR FASTENER - FORGED BRASS

Fixings supplied.



PRODUCT CODE	DESCRIPTION	QTY	PER	PCK
475BR	F/DOOR FASTENER BRASS	1	EA	5
475CP	F/DOOR FASTENER CHROME	1	EA	5
475SC	F/DOOR FASTENER S/CHROME	1	EA	5
475FB	F/DOOR FASTENER BRONZE	1	EA	5

## SLIM KNOCKER - SOLID BRASS

Fixings supplied.



PRODUCT CODE	DESCRIPTION	QTY	PER	PCK
48BR3033	DOOR KNOCKER SLIM BRASS	1	EA	1
48CP3033	DOOR KNOCKER SLIM CHROME	1	EA	1

## EDWARDIAN KNOCKER - SOLID BRASS

Fixings supplied.



PRODUCT CODE	DESCRIPTION	QTY	PER	PCK
48BR3034	DOOR KNOCKER BRASS	1	EA	1
48CP3034	DOOR KNOCKER CHROME	1	EA	1